



MONTHLY MEMBERSHIP PROGRESS REPORT

District 14 F

Results as of: 10/31/2018

GMT: CINDY GREGG

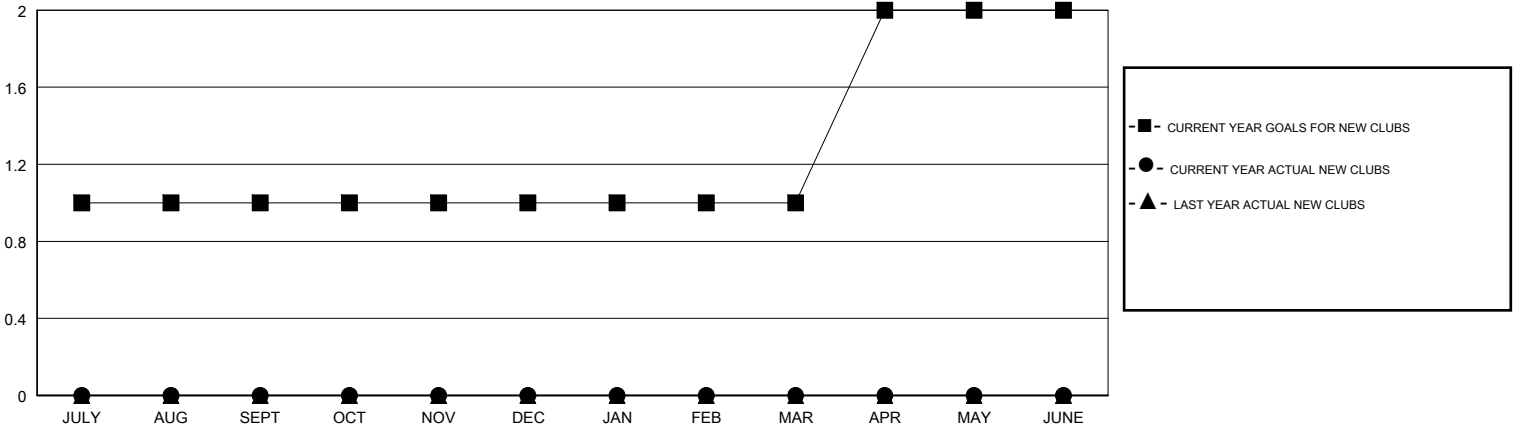
LOCATION PENNSYLVANIA

GMT CA

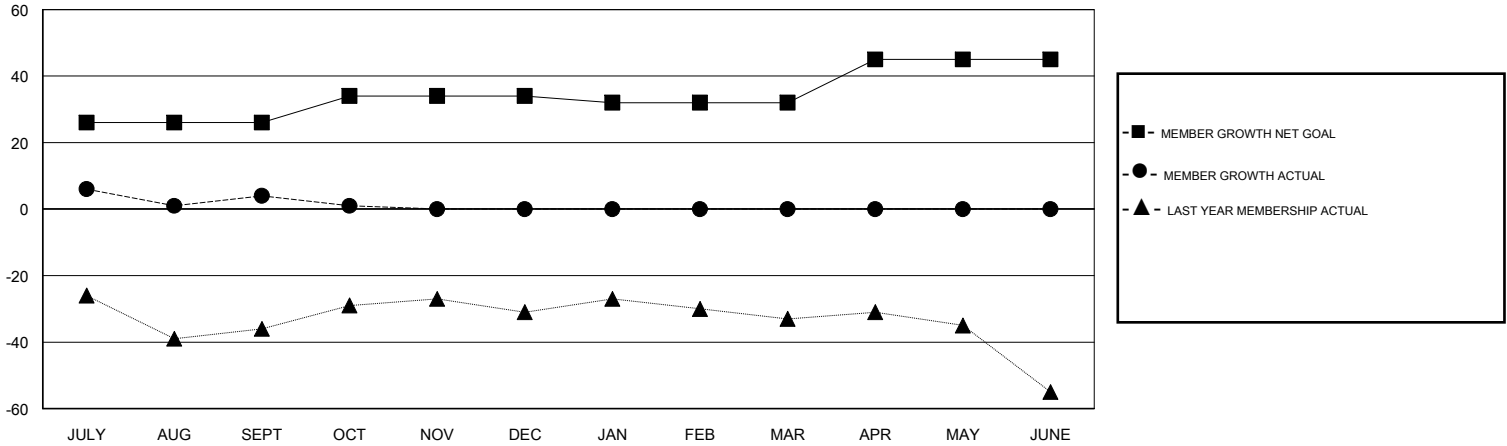
| Clubs | | | |
|-----------------------|---------------|-----------|---------------|
| RESULTS FOR 2018-2019 | | | |
| QUARTER | NEW CLUB GOAL | NEW CLUBS | DROPPED CLUBS |
| JULY/AUG/SEPT | 1 | 0 | 0 |
| OCT/NOV/DEC | 0 | 0 | 0 |
| JAN/FEB/MAR | 0 | 0 | 0 |
| APR/MAY/JUNE | 1 | 0 | 0 |

| Members | | | |
|-----------------------|------------------------|----------------------|--|
| RESULTS FOR 2018-2019 | | | |
| QUARTER | MEMBER GROWTH NET GOAL | MEMBER GROWTH ACTUAL | DROPPED MEMBERS ACTUAL (including transfers) |
| JULY/AUG/SEPT | 26 | 17 | 13 |
| OCT/NOV/DEC | 8 | 6 | 9 |
| JAN/FEB/MAR | -2 | 0 | 0 |
| APR/MAY/JUNE | 13 | 0 | 0 |

GOALS AND ACTUAL NEW CLUBS CUMULATIVE



GOALS AND ACTUAL MEMBERS CUMULATIVE



| | | |
|--|---|--|
| DROPPED CLUBS: 0 | 12 CLUBS OF 40 ADDED 1 OR MORE NEW MEMBERS | <u>GENDER DISTRIBUTION</u> MALE 864 (78.12%) FEMALE 242 (21.88%) Women Percentage Fiscal Year Goal: 24% |
| <u>DROPPED MEMBERS</u> DECEASED 8 CLUB CANCELLED 0 OTHER 14 TOTAL 22 | CLICK HERE FOR CUMULATIVE MEMBERSHIP DATA | TOTAL FAMILY UNIT MEMBERS 191 FAMILY MEMBERS PAYING HALF DUES 100 |